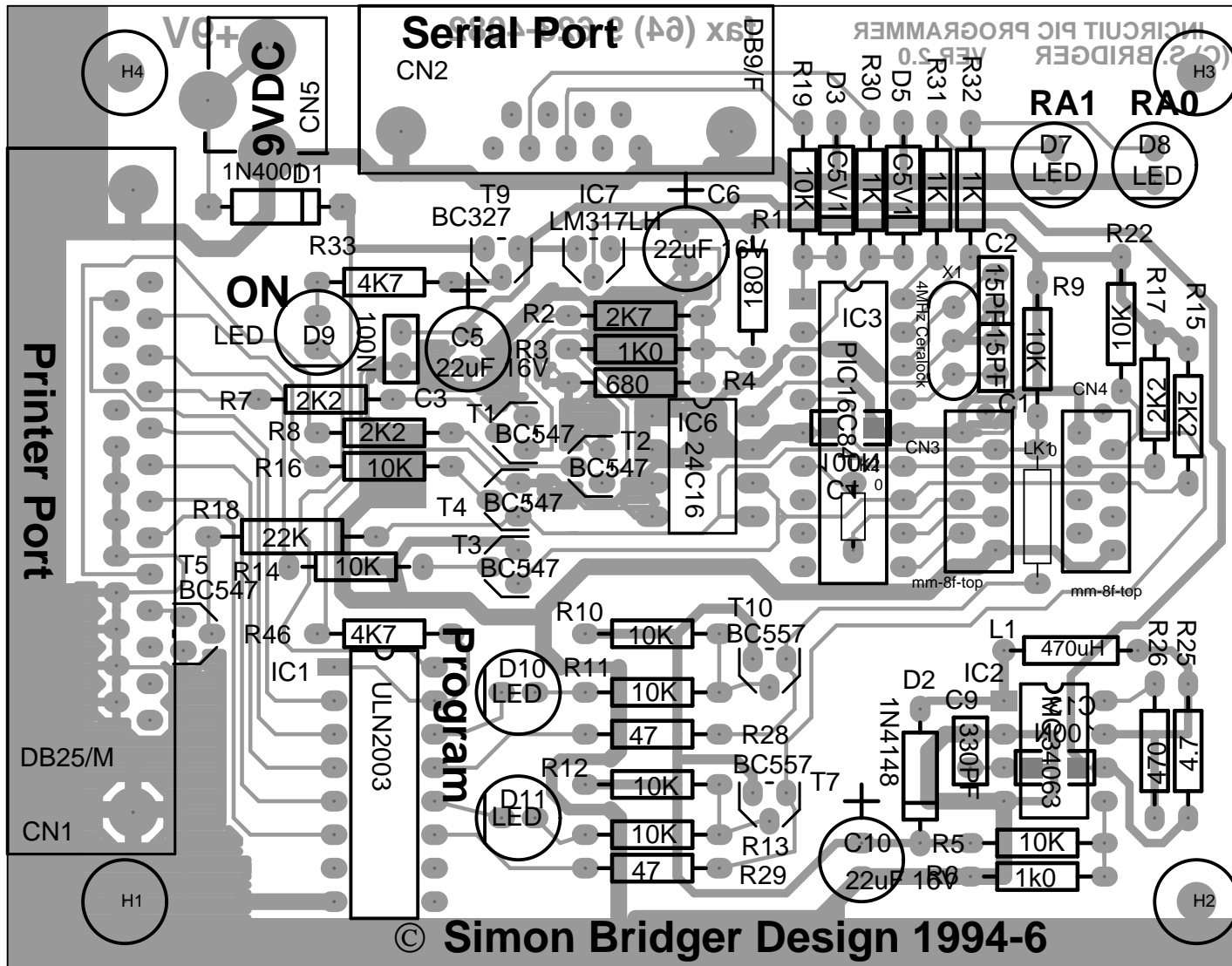


Dual In-Circuit PIC Programmer



In-Circuit Programming Connectors

Vdd	Vdd
RST	RST
RB7/SDA	RB7
RB6/SCL	RB6
RB0	
RB5	
RB4	
Vss	Vss
Target 1 (&socket)	Target 2

fax (64) 9 623-4082

© Simon Bridger Design 1994-6

3.707" x 2.882" picpn.pcb 17:25 1996 3 18 0001 C0BOVCL